

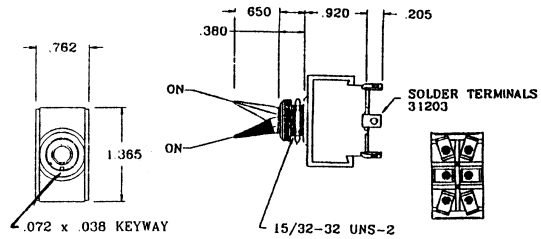
SWITCHES PADDLE HANDLE TOGGLE

STANDARD SIZE PADDLE HANDLE TOGGLE SWITCH

SPECIFICATIONS:

Current Rating:	20A @ 125V AC, 10A @ 250V AC
Initial Contact Resistance:	20 Meg ohm (Max.)
Insulation Resistance:	500V DC 100 Meg ohm (Min.)
Dielectric Strength:	1500V AC for 1 minute
Contact Material:	Brass
Terminal Material:	Brass
Terminal Type:	Solder

Part No.	Type	Action			Actuator
30-088	DPDT	ON	OFF	ON	Black Nylon



Mounting Hole: 0.500"

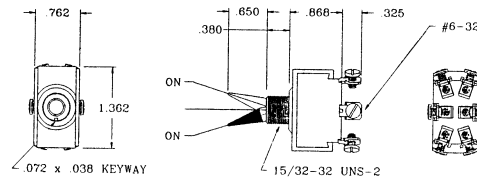


AUTOMOTIVE/MARINE TOGGLE SWITCHES

SPECIFICATIONS:

Current Rating:	20A @ 125V AC, 10A @ 250V AC
Initial Contact Resistance:	20 Meg ohm (Max.)
Insulation Resistance:	100 Meg ohm (Min.)
Dielectric Strength:	1000V AC for 1 minute
Contact Material:	Brass
Terminal Material:	Brass
Terminal Type:	Screw

Part No.	Type	Action			Actuator
30-160	SPST	ON	-	OFF	Nylon
30-162	SPDT	ON	-	ON	Nylon
30-164	DPST	ON	-	OFF	Nylon
30-166	DPDT	ON	-	ON	Nylon
30-168	DPDT	ON	OFF	ON	Nylon



Mounting Hole: 0.500"



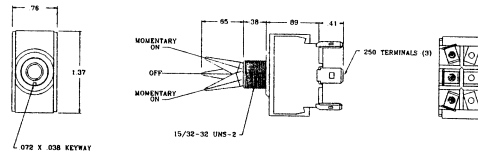
AUTOMOTIVE/MARINE TOGGLE SWITCHES

SPECIFICATIONS:

Current Rating:	20A @ 125V AC, 10A @ 250V AC
Initial Contact Resistance:	20 Meg ohm (Max.)
Insulation Resistance:	100 Meg ohm (Min.)
Dielectric Strength:	1000V AC for 1 minute
Contact Material:	Brass
Terminal Material:	Brass
Terminal Type:	.250" Quick Connect

Part No.	Type	Action			Actuator
30-150	SPDT	ON	OFF	ON	Nylon
30-152	SPDT	(ON)	OFF	(ON)	Nylon
30-154	DPST	ON	-	OFF	Nylon
30-156	DPDT	ON	-	ON	Nylon
30-158	DPDT	ON	OFF	ON	Nylon

NOTE: () = Momentary



Mounting Hole: 0.500"



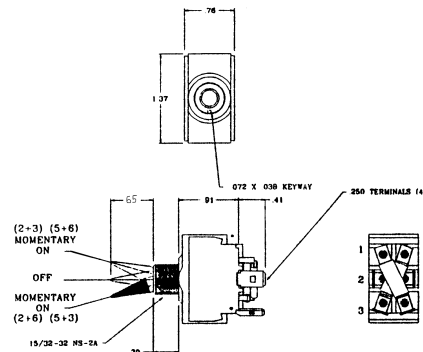
REVERSING TOGGLE SWITCH

SPECIFICATIONS:

Current Rating:	21A @ 14V DC
Initial Contact Resistance:	20 Meg ohm (Max.)
Insulation Resistance:	100 Meg ohm (Min.)
Dielectric Strength:	1000V AC for 1 minute
Contact Material:	Brass
Terminal Material:	Brass
Terminal Type:	.250" Quick Connect

Part No.	Type	Action			Actuator
30-125	DPDT	(ON)	OFF	(ON)	Nylon

NOTE: () = Momentary



Mounting Hole: 0.500"

